



**Experience confidence,
clarity and comfort**

DEXIS Ti2 Sensor



The #1 Sensor just got upgraded*

Introducing the DEXIS Ti2 Sensor, the next generation of intraoral x-ray sensors.

Comfortable, durable and one-size-fits-all, the DEXIS™ Ti2 Sensor allows you to capture high-resolution images consistently and enhance your diagnostic capabilities through AI.**

The Ti2 Sensor uses CleanCapture™ technology to capture high-clarity images by reducing noise and enhancing anatomical detail. The technology allows the sensor to be flexible and ready to adapt to varying exposure levels, generator usage, or positioning technique to capture clear, accurate images reliably – even in challenging circumstances.

ACQUIRE



Able to take a Full Mouth Series (FMX) in 5 minutes or less***

PLAN



2D AI Dental Findings automatically identifies six types of dental findings on 2D images

TREAT



Works seamlessly with popular image acquisition and practice management software

2D AI Dental Findings trial included with sensor purchase.

Award-winning solutions

With an expansive portfolio of industry-leading products, DEXIS solutions provide you with more options and flexibility to meet your patients' needs and practice goals.



*DEXIS Titanium Sensor- December 2023 SDM US Market Share Data.
**2D AI Dental Findings available through a direct integration with DTX Studio™ Clinic
***Data on file.

Proactive servicing and equipment monitoring

Get real-time equipment monitoring and proactive servicing of your sensor to keep your workflows running smoothly with DEXIS Connect Pro. DEXIS Connect Pro monitors your sensor's health and arranges automatic support or equipment replacements if performance issues are ever detected - trial included with every sensor purchase.

DEXIS Connect Pro

Real-time equipment monitoring and servicing for your sensor using IoT technology.

Designed to last

Enhance reliability with twice the durability and two times the drop-resistance of previous sensor generations.

2D AI dental findings

Your 2D AI dental findings tool is your image analysis partner, automatically identifying six types of dental findings on 2D radiographs, prompting you to evaluate each one and standardizing your diagnostic threshold.

Proactive servicing

DEXIS Connect Pro is designed to ensure continuous peak performance of your sensor, proactively monitoring and scheduling support or automatic equipment replacement.*

High-clarity images

Boost diagnostic confidence with CleanCapture™ technology for excellent gray scale uniformity. High contrast-to-noise ratio provides you with more details and less noise.



Patient comfort

Equipped with its PerfectSize™ design and TrueComfort™ shape, the Ti2 Sensor is engineered to fit every patient comfortably – making it your one-size-fits-all solution.

*Automatic sensor replacement under warranty.

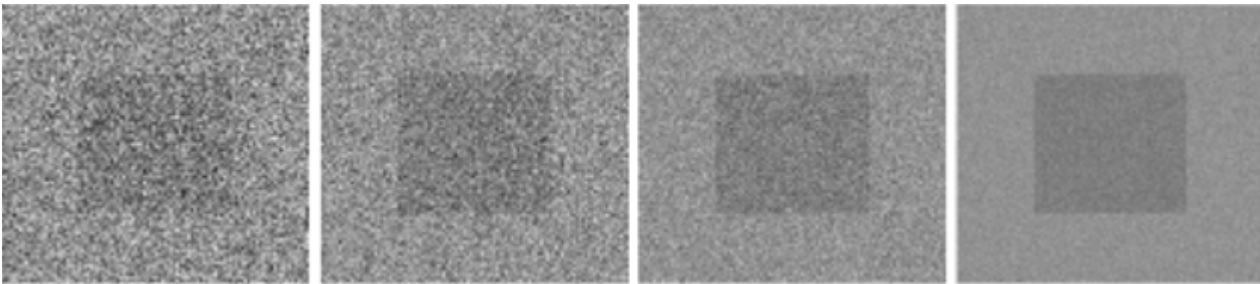
High-clarity images with less noise and more detail

Ti2 Sensors capture consistent, high-resolution images with improved tissue contrast across the broader spectrum of radiation levels – especially at low doses.

CleanCapture™ technology reduces noise and enhances anatomical detail. The technology’s advanced pixel design targets the “sweet spot” for dental imaging, or just the right balance of pixel size and scintillator performance – so you can capture high-resolution images reliably, even in challenging circumstances.



Increasing contrast-to-noise ratio



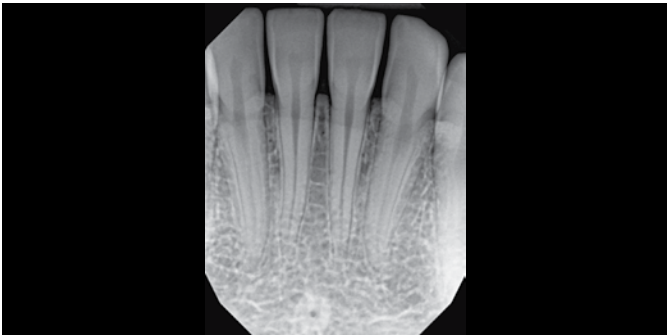
A high contrast-to-noise ratio is an important characteristic of a great quality dental x-ray image. In the example above, it is easy to see the difference in closely spaced gray values when the contrast-to-noise ratio is higher.



“

Drawing from my experience with the DEXIS legacy sensors, the images consistently demonstrate an excellent contrast-to-noise ratio.”

Dr. Katya Archambault | Oral and Maxillofacial Radiologist | USA



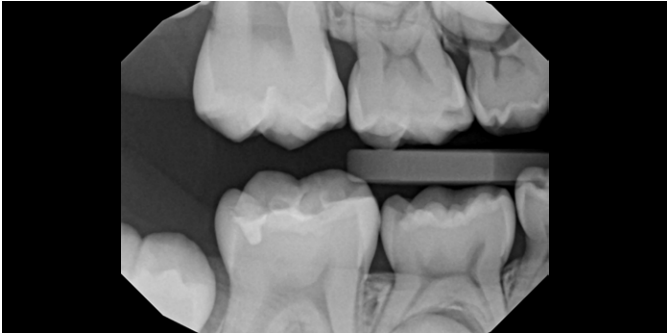
Periapical images

Periapical images allow for visualization of a tooth’s anatomy, such as enamel, dentin, DEJ, pulp, PDL, and crestal bone



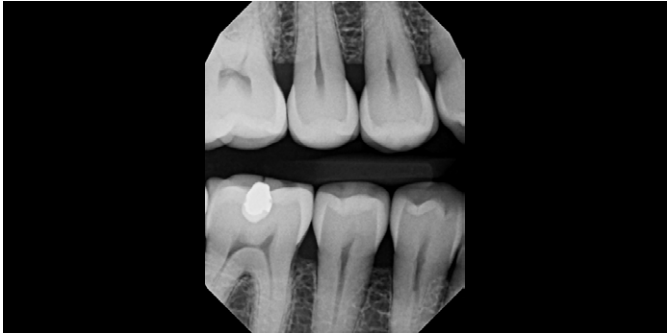
From crown to apex

Easily capture for full crown to apex visualization



Maxillary and mandibular crowns

Visualize maxillary and mandibular crowns along with interproximal surfaces of the teeth



Bitewing image

Crisp detail from crown to bone level, perfect for detecting interdental decay and periodontal changes

2D AI Dental Findings trial included with sensor purchase.

AI-powered dental findings for 2D images

The 2D AI dental findings tool identifies six types of dental findings on 2D radiographs, prompting you to evaluate each highlighted area and standardizing your diagnostic threshold.

Also compatible with DEXIS Titanium, DEXIS IXS, DEXIS Platinum and GXS-700 sensors.



Caries



Periapical Radiolucency



Root Canal Filling Deficiency



Bone Loss



Calculus



Discrepancy at Margin of Existing Restoration

Example shown is from DEXassist Solution. The DTX Studio Clinic implementation will appear in a slightly different format.

Software designed with clinicians in mind

DEXIS Imaging Suite

Manage your 2D x-rays, clinical photos and intraoral scans through the highly-intuitive, DEXIS Imaging Suite software.

2D AI Dental Findings is accessed through the software’s seamless integration with DTX Studio™ Clinic.



DTX Studio Clinic

Bring all your image formats (x-ray, photos, 2D, 3D, intraoral and extraoral) into one clear, comprehensive view with DTX Studio Clinic.

Take intraoral x-rays freely and let AI auto mount, rotate and number teeth — filling FMX templates in any order of acquisition. The MagicSort™ tool automatically assigns tooth numbers, rotates the images, and places them in your template of choice for ease of organizing and retrieval of x-rays.



“I look at 2D AI Dental Findings as a tool which supports us raising the minimum threshold of diagnosis. If I’m looking at film, I’m only as good as what’s in my own brain. If there are 10 of us in a room, you may get 8 different diagnoses – but if the AI tool is suddenly giving all of us multiple findings on a radiograph, we have to address them. So, it raises our diagnostic threshold and it’s up to our clinical judgement whether we agree or disagree with the potential findings. It’s that simple. That’s genius.



Dr. Paresh Shah | General Dentistry | Canada

Performance and durability built to last

Designed to provide increased tensile strength, the Ti2 Sensor housing is engineered from a thermo-plastic resin that stands up to heavy physical use, as well as a wide variety of disinfectant chemicals — keeping you and your patients protected.

No matter how careful you are during radiographic procedures, patients can sometimes bite on the sensor. By using advanced housing materials and a 100N bite force specification, we were able to better compensate for the amount of force the sensor should withstand from bite pressure. The mechanical design of the sensor housing is built to endure higher external forces and still perform at the same exceptional quality*.

Dependable signals

Advanced internal components allow for optimal signal performance, delivering reliable imaging results over time.

The cable-to-USB connection features short circuit protection.

Durable materials

With twice the durability of the DEXIS Titanium Sensor, the Ti2 Sensor outer cable cover effectively withstands forces like biting, twisting, tugging, plus eliminates cable drag and tangling.

During laboratory tests, the Ti2 Sensor cable maintained high sensor/computer signal strength while being flexed over 100,000 times.*

Strong connections

To combat separation, the cable’s external jacket material extends over and is “welded” to the USB housing.

WiseAngle™ design helps reduce stress on the sensor-to-cable connection.

*Data on file



39.9 mm

29.8 mm

The Ti2 Sensor provides reliable portability with a plug-and-play USB 3.0 connector, which allows for a larger number of smooth insertions compared to USB 2.0.

Award-winning TrueComfort and PerfectSize design

The Ti2 Sensor is designed to comfortably fit every patient, thanks to its PerfectSize™ and TrueComfort™ features. You no longer need to search for the right sensor to fit your patient.

The PerfectSize design of the Ti2 Sensor has round corners, smooth edges, and an efficient active area, making it the only sensor your practice requires. Its anatomical design combines smooth edges, rounded corners, and an efficient active area, providing a one-size-fits-all solution.



“

Our patients have responded positively to the comfortable design of the Ti2 Sensor. The slim profile and edge design minimize discomfort especially for sensitive patients who tend to gag during radiographs. Patients that in the past have been reluctant to have radiographs taken due to comfort are now able to have full mouth series taken to better treatment plan for them.

Dr. Moe Katz | General Dentistry | USA



Accessories and specifications



We crafted DEXIS Ti2 Sensor bite blocks and rings out of tough, thermoplastic resin similar to what is used in the sensor housing so they are exceedingly resilient. The sensor’s holders are designed to have a higher tensile strength to withstand frequent placement and a wide variety of disinfectants — all without material or color degradation*.

Biteblocks deliver TrueComfort for patients as they hug the sensor, eliminating gaps that can catch on soft tissue. At the same time, a protective coating for the sensor-to-cable connection prolongs cable and sensor life.

“

The DEXIS Ti2 Sensor holders have made a huge difference in patient comfort. We get positive comments about them on a daily basis, particularly from patients who gag easily or have tori.

Dr. Mark A. Kuhl | General Dentistry | USA



Dimensions	1623 x 1324 pixels
Pixel Size	19.5 µm
Physical Size	39.9 mm x 29.8 mm
Resolution	Theoretical: 25.6 lp/mm Visible: 20+ lp/mm
USB Port	USB 2.0 / USB 3.0
Cable Length / Diameter	2.5m / 3mm
Cable Material	Aramid-fiber Reinforced
Driver	DEXIS IO Sensor Driver 3.0 or higher
Sensor Technology	Enhanced CMOS (Csi Scintillator + Optical Fibers)
Manufacturer’s Warranty	1 year
IoT Connectivity	Device Health Monitoring, Automatic Software Updates
Device Protection	Over Current, Over Voltage and Low Power
Recommended Software	DTX Studio Clinic 3.4.11 or higher, DEXIS 10.4.1 or higher
Minimum Supported Software	DTX Studio Clinic 3.4.11 or higher, DEXIS 9.5.0 or higher, DEXIS 10.1.6 or higher, GxPicture 4.1.0 or higher

*As compared to DEXIS Platinum sensor. Data on file.

60-day satisfaction guaranteed

Our commitment to quality products goes beyond just great images. We strive to offer solutions that improve your workflow and make your work experience more efficient. Take up to 60 days to make sure that our products work for your office.

Extending your DEXIS
Complete protection is available
for additional peace-of-mind.

DEXIS Connect Pro – proactive servicing

DEXIS Connect Pro, included with new sensor warranties and DEXIS Complete Premier Tier service agreements, is designed to ensure continuous peak performance of your sensor through the use of IoT technology.

The solution proactively monitors your sensor's health, scheduling automatic support calls or next-day equipment replacements if performance issues are ever detected – so you can ensure your workflow is always running smoothly.

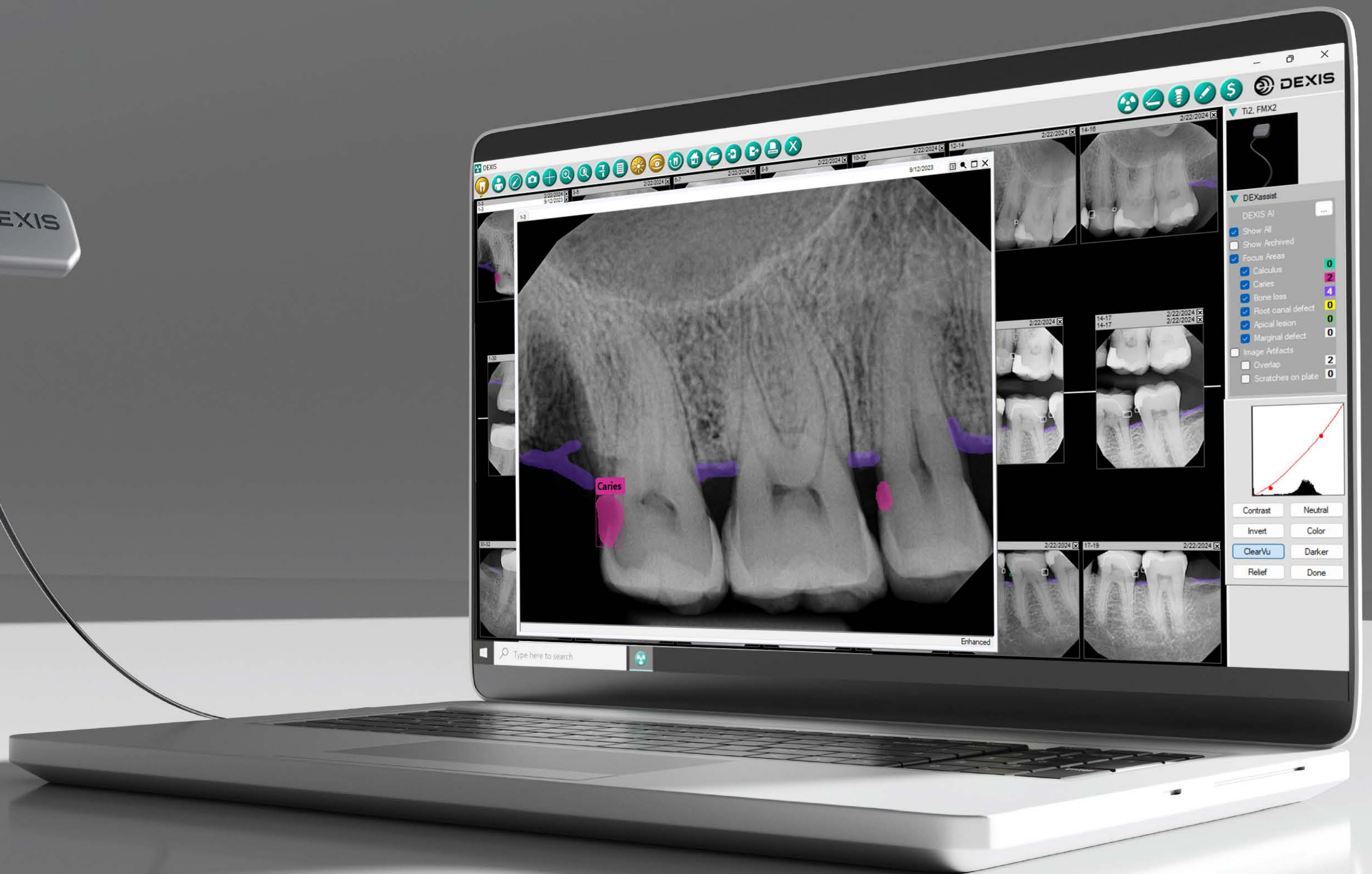
DEXIS Complete – warranty coverage

The Ti2 Sensor includes an unconditional replacement under warranty with all purchases. Covered by the DEXIS Complete Premier coverage tier during the first year of ownership, this unique warranty includes no charge, next-day replacements for performance issues.

*Terms and conditions apply

Unconditional replacement under warranty and proactive servicing







ABOUT DEXIS

DEXIS is the global leader in dental imaging. We bring together the most trusted brands in 2D and 3D imaging, intraoral scanning solutions, and diagnostic software, in one connected and AI-powered ecosystem. Our innovative and award-winning technologies use smart simplicity to increase productivity and enhance diagnostic confidence. For more information, please visit [DEXIS.com](https://www.dexis.com)

The products, equipment and services illustrated and described in this brochure reflect knowledge at the time of printing. Full or partial reprinting is only permitted with permission from Dental Imaging Technologies Corporation. For more information, please visit: www.dexis.com.

Dental Imaging Technologies Corporation reserves the right to make changes to specifications and features shown herein, or to discontinue the product described at any time without notice or obligation. Contact your local authorized representative for the most current information.

The opinions presented in this material belong to the doctors featured in this material who are paid consultants for DEXIS. Dental Imaging Technologies Corporation is a medical device manufacturer and does not dispense medical advice. Clinicians should use their own judgment in treating their patients.

© Dental Imaging Technologies Corporation. DEXIS, Ti2 is a trademark or registered trademark of Dental Imaging Technologies Corporation. DTX Studio is a trademark or registered trademark of Nobel Biocare Services AG. All rights reserved. All trademarks are the property of their respective owners. 2024 DXIS00629/RevD

**Diagnostic confidence,
productivity, and
smart simplicity for
you and your team**